

Enolase Polyclonal Antibody
Catalog # AP69744**Specification**

Enolase Polyclonal Antibody - Product Information

Application	WB, IHC-P, IF
Primary Accession	P09104
Reactivity	Human, Mouse, Rat
Host	Rabbit
Clonality	Polyclonal

Enolase Polyclonal Antibody - Additional Information**Gene ID** 2026**Other Names**ENO2; Gamma-enolase; 2-phospho-D-glycerate hydro-lyase; Enolase 2; Neural enolase;
Neuron-specific enolase; NSE**Dilution**WB~~Western Blot: 1/500 - 1/2000. Immunohistochemistry: 1/100 - 1/300. Immunofluorescence:
1/200 - 1/1000. ELISA: 1/10000. Not yet tested in other applications.
IHC-P~~N/A
IF~~1:50~200**Format**

Liquid in PBS containing 50% glycerol, 0.5% BSA and 0.09% (W/V) sodium azide.

Storage Conditions

-20°C

Enolase Polyclonal Antibody - Protein Information**Name** ENO2 ([HGNC:3353](#))**Function**

Enolase that catalyzes the conversion of 2-phosphoglycerate to phosphoenolpyruvate in glycolysis and the reverse reaction in gluconeogenesis (By similarity). Has neurotrophic and neuroprotective properties on a broad spectrum of central nervous system (CNS) neurons. Binds, in a calcium-dependent manner, to cultured neocortical neurons and promotes cell survival (By similarity).

Cellular Location

Cytoplasm. Cell membrane. Note=Can translocate to the plasma membrane in either the homodimeric (alpha/alpha) or heterodimeric (alpha/gamma) form

Tissue Location

The alpha/alpha homodimer is expressed in embryo and in most adult tissues. The alpha/beta

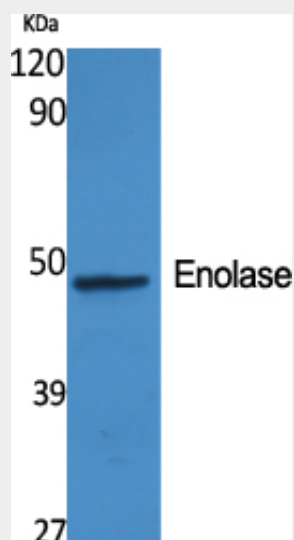
heterodimer and the beta/beta homodimer are found in striated muscle, and the alpha/gamma heterodimer and the gamma/gamma homodimer in neurons

Enolase Polyclonal Antibody - Protocols

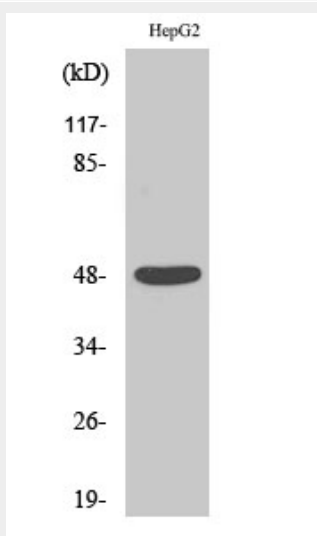
Provided below are standard protocols that you may find useful for product applications.

- [Western Blot](#)
- [Blocking Peptides](#)
- [Dot Blot](#)
- [Immunohistochemistry](#)
- [Immunofluorescence](#)
- [Immunoprecipitation](#)
- [Flow Cytometry](#)
- [Cell Culture](#)

Enolase Polyclonal Antibody - Images



Western Blot analysis of various cells using Enolase Polyclonal Antibody diluted at 1:2000



Western Blot analysis of HepG2 cells using Enolase Polyclonal Antibody diluted at 1:2000

Enolase Polyclonal Antibody - Background

Has neurotrophic and neuroprotective properties on a broad spectrum of central nervous system (CNS) neurons. Binds, in a calcium-dependent manner, to cultured neocortical neurons and promotes cell survival (By similarity).